

# **STURMEY**

# **ARCHER**

## **ILLUSTRATED SPARE PARTS LIST**

**FOR**

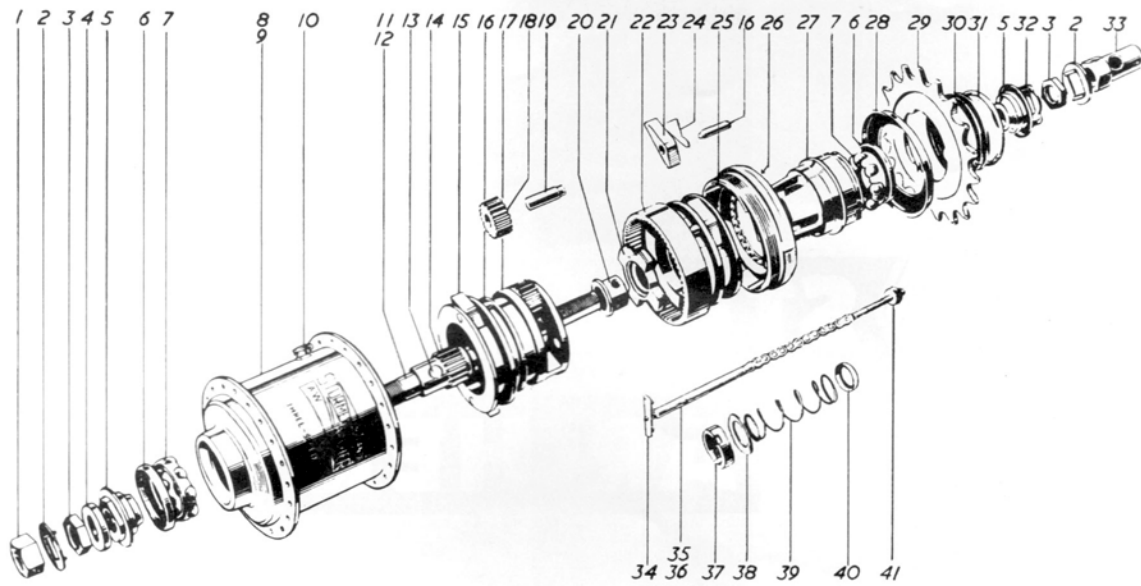
**GEARS · BRAKES · LIGHTING EQUIPMENT**

**RALEIGH INDUSTRIES LIMITED · NOTTINGHAM · ENGLAND**

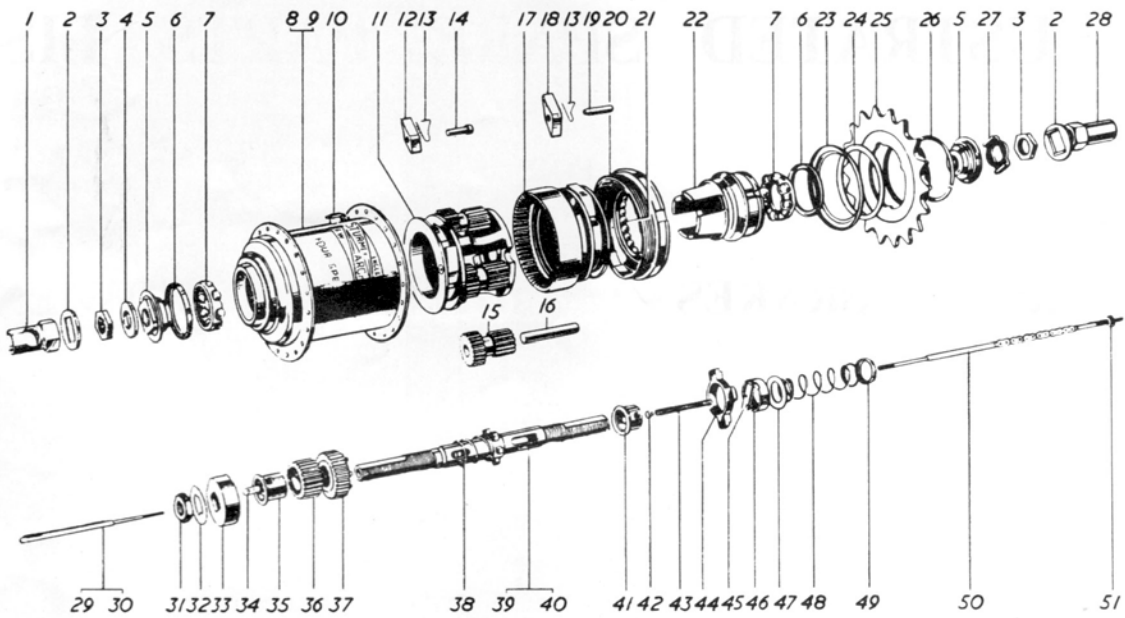
A  COMPANY

MAY 1966

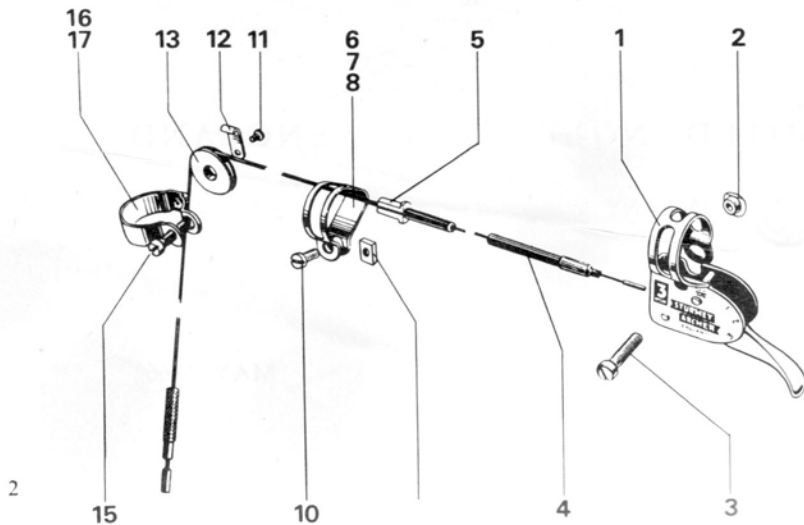
**AW WIDE-RATIO 3-SPEED HUB**



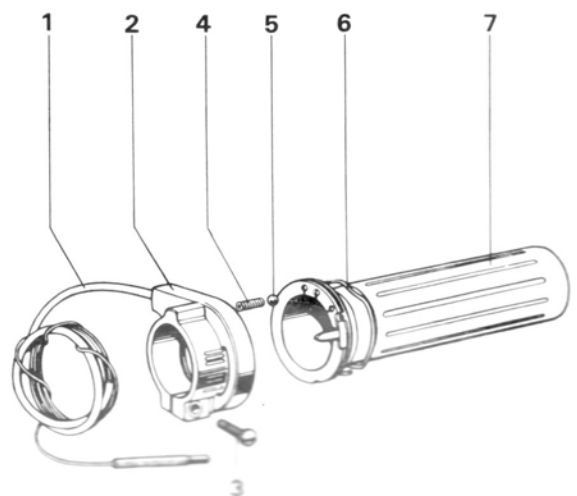
**FW WIDE-RATIO 4-SPEED HUB**



**TRIGGER 3- and 4-SPEED CONTROL**



**TWIST-GRIP CONTROL**



**AW WIDE-RATIO 3-SPEED HUB**

Photo No.	Sales No.	Description	Photo No.	Sales No.	Description
1	HMN128	L.H. Axle Nut	22	HSA118	Gear Ring
2	HMW145	Axle Lock Washer	23	HSA119	Gear Ring Pawl
3	HMN132	Lock Nut	24	HSA120	Pawl Spring
4	HMW129	Axle Washer, $\frac{1}{8}$ " thick	25	HSA121	R.H. Ball Ring
5	HSA101	Cone with Dust Cap	26	HSA122	Inner Dust-Cap
6	HSA102	Outer Dust Cap	27	HSA123	Driver
7	HSA103	Ball Cage—(with Ball Bearings) (8)	28	HSL701	Sprocket Dust Cap
8	HSA104	Shell—40 hole—and Ball Cup Combined	29	See page 11	Sprocket, 16-20 plus 22T
9	HSA105	Shell—36 hole—and Ball Cup Combined	30	HMW127	Sprocket Spacing Washer
10	HSA106	Lubricator (Plastic)	31	HSL721	Sprocket Circlip
11	HSA107	Axle— $5\frac{3}{4}$ "	32	HMW147	Cone Lockwasher
12	HSA108	Axle— $6\frac{1}{4}$ "	33	HMN129	R.H. Axle Nut
13	HSA109	Dowel	34	HSA124	Axle Key
14	HSA110	Sun Pinion	35	HSA125	Indicator Coupling— $5\frac{3}{4}$ " Axle
15	HSA111	Low Gear Pawl	36	HSA126	Indicator Coupling— $6\frac{1}{4}$ " Axle
16	HSA112	Pawl Pin	37	HSA127	Thrust Ring
17	HSA113	Planet Cage	38	HMW148	Thrust Washer
18	HSA115	Planet Pinion	39	HSA128	Clutch Spring
19	HSA114	Pinion Pin	40	HSA129	Clutch Spring Cap
20	HSA116	Clutch Sleeve	41	HMN134	Indicator Coupling Connection Lock Nut
21	HSA117	Clutch			

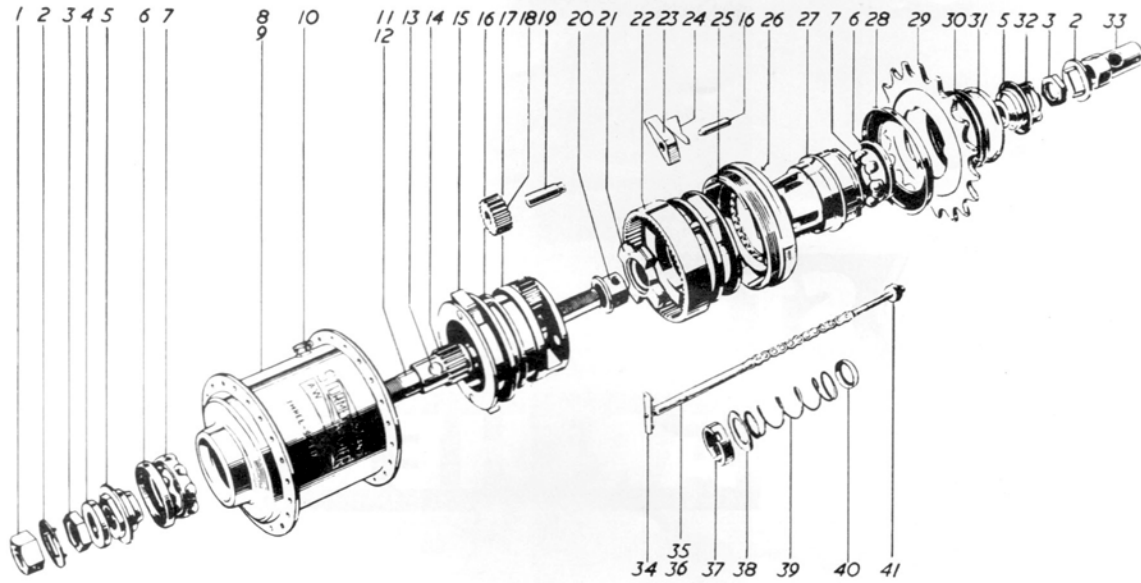
**FW WIDE-RATIO 4-SPEED HUB**

Photo No.	Sales No.	Description	Photo No.	Sales No.	Description
1	HMN130	L.H. Axle Nut	27	HMW147	Cone Lockwasher
2	HMW145	Axle Washer	28	HMN131	R.H. Axle Nut
3	HMN132	Cone Locknut	29	HSA136	Gear Indicator Rod— $5\frac{3}{4}$ " Axle
4	HMW129	Axle Spacing Washer ( $\frac{1}{8}$ " )	30	HSA137	Gear Indicator Rod— $6\frac{1}{4}$ " Axle
5	HSA101	Cone	31	HMN133	Locknut for Dog-Ring
6	HSA102	Outer Dust Cap	32	HMW149	Lockwasher for Dog-Ring
7	HSA103	Ball Cage	33	HSA138	Dog-Ring
8	HSA130	Shell—40 hole—and Ball Cup Combined	34	HSA139	Low Gear Key
9	HSA131	Shell—36 hole—and Ball Cup Combined	35	HSA140	Pinion Sleeve
10	HSA106	Lubricator (Plastic)	36	HSA141	Secondary Sun Pinion
11	HSA132	Planet Cage	37	HSA142	Primary Sun Pinion
12	HSA111	Low Gear Pawl	38	HSA143	Low Gear Spring—*
13	HSA120	Pawl Spring	39	HSA144	Axle— $5\frac{3}{4}$ "
14	HSA133	Planet Cage Pawl Pin	40	HSA145	Axle— $6\frac{1}{4}$ "
15	HSA134	Planet Pinion	41	HSA116	Clutch Sleeve
16	HSA135	Pinion Pin	42	HSA146	Collar for Compensator Spring
17	HSA118	Gear Ring	43	HSA147	Compensator Spring—*
18	HSA119	Gear Ring Pawl	44	HSA117	Clutch
19	HSA112	Pawl Pin	45	HSA163	Axle Key
20	HSA121	R.H. Ball Ring	46	HSA127	Thrust Ring
21	HSA122	Inner Dust Cap	47	HMW148	Thrust Washer
22	HSA123	Driver	48	HSA148	Clutch Spring—*
23	HSL701	Sprocket Dust Cap	49	HSA129	Spring Cap
24	HMW127	Sprocket Spacing Washer	50	HSA149	Gear Indicator Coupling
25	See page 11	Sprocket—16-20T	51	HMN134	Connection Locknut
26	HSL721	Sprocket Circlip			N.B.—* Replace Set of Springs

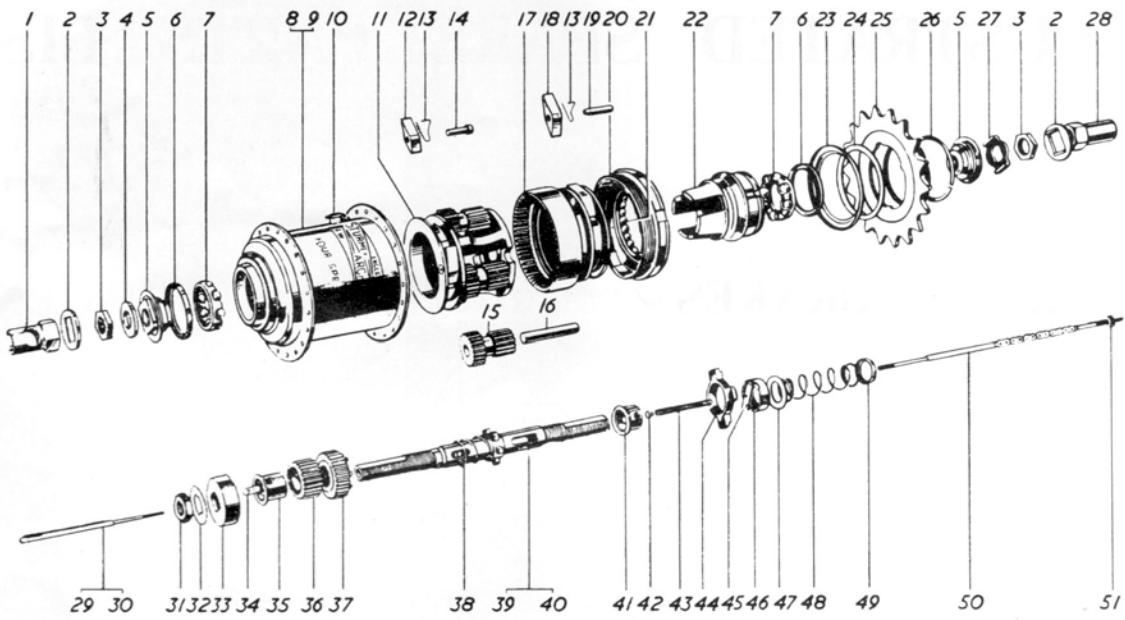
**TRIGGER 3- AND 4-SPEED CONTROL**

Photo No.	Sales No.	Description	Photo No.	Sales No.	Description	
1	HSJ501	3-speed Trigger Control with fulcrum, cable, and pulley	13	HSJ519	Pulley Wheel only	
	HSJ503	3-speed Trigger Control with fulcrum and cable (less pulley)	14	HMN142	Pulley Clip Nut	
	HSJ505	3-speed Trigger Unit ( $\frac{7}{8}$ " Clip)	15	HMB102	Pulley Clip Screw	
	HSJ506	3-speed Trigger Unit ( $\frac{1}{8}$ " Clip) for Taped Handlebars	16	HSJ520	Pulley Assembly, complete, for 1" tube	
	HSJ507	3-speed Trigger Unit ( $\frac{1}{8}$ " Clip) for Untaped Handlebars	17	HSJ521	Pulley Assembly, complete, for $1\frac{1}{8}$ " tube	
				HSJ502	4-speed Trigger Control with fulcrum, cable and pulley	
				HSJ504	4-speed Trigger Control with fulcrum and cable (less pulley)	
				HSJ508	4-speed Trigger Unit— $\frac{7}{8}$ " diam. clip	
				HSJ509	4-speed Trigger Unit— $\frac{1}{8}$ " diam. Clip for Untaped Handlebars	
				HSJ510	4-speed Trigger Unit— $\frac{1}{8}$ " diam. Clip for Taped Handlebars	
	2	HMN142	Clip Nut			<b>3-SPEED TWIST-GRIP CONTROL</b>
	3	HMB102	Clip Screw	1	HSJ535	Twistgrip Control complete with Spare Grip
4	HSJ516	Trigger Control Cable for Chainstay Fitting Fulcrum (State length and colour)	HSJ530		Twistgrip control cable for Top Tube Fitting Fulcrum (State length and colour)	
	HSJ517	Trigger Control Cable for Top Tube Fitting Fulcrum (State length and colour)	HSJ551		Twistgrip Control Cable for Chainstay Fitting Fulcrum (State length and colour)	
5	HSJ515	Fulcrum Sleeve	2		HSJ531	Collar
6	HSJ512	Fulcrum Clip Assembly, complete, 1" diam. tube	3		HMB103	Bolt for Collar
7	HSJ513	Fulcrum Clip Assembly, complete, $\frac{7}{8}$ " diam. tube	4		HSJ532	Detent Spring
8	HSJ514	Fulcrum Clip Assembly, complete, $1\frac{1}{8}$ " diam. tube	5		HML101	Detent Ball, $\frac{3}{8}$ " diam.
	HSJ547	Roadster—Chainstay Fulcrum Clip Comp.	6	HSJ533	Spring Ring	
	HSJ548	Sports—Chainstay Fulcrum Clip Comp.	7	HSJ534	Twist Grip/Detent Plate	
9	RMN105	Fulcrum Clip Nut		RNL104	Plastic Grip (L/H) White	
10	HMB103	Fulcrum Clip Screw		RNL112	Plastic Grip (R/H) White	
11	HMB141	Pulley Arm Screw				
12	HSJ518	Pulley Arm				

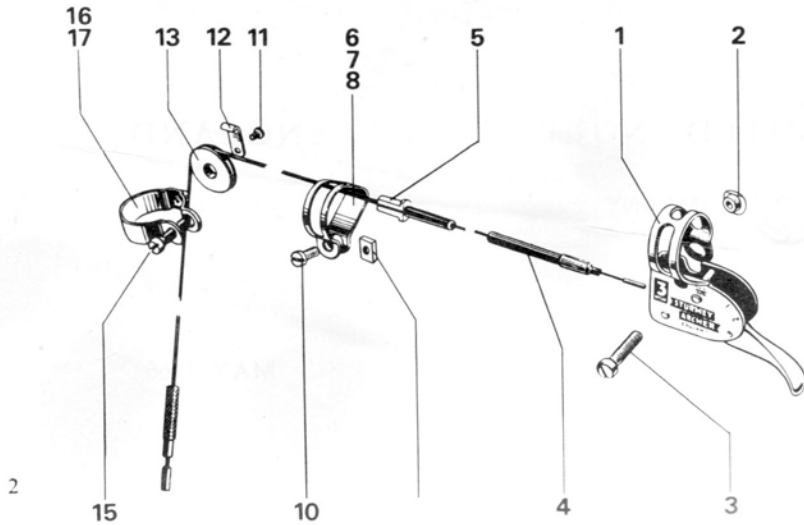
**AW WIDE-RATIO 3-SPEED HUB**



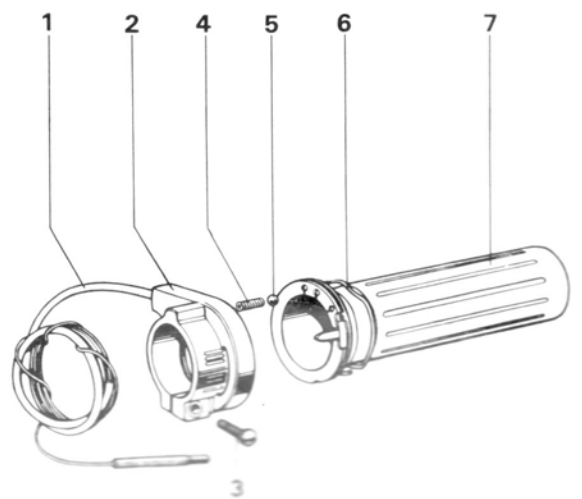
**FW WIDE-RATIO 4-SPEED HUB**



**TRIGGER 3- and 4-SPEED CONTROL**



**TWIST-GRIP CONTROL**



**AW WIDE-RATIO 3-SPEED HUB**

Photo No.	Sales No.	Description	Photo No.	Sales No.	Description
1	HMN128	L.H. Axle Nut	22	HSA118	Gear Ring
2	HMW145	Axle Lock Washer	23	HSA119	Gear Ring Pawl
3	HMN132	Lock Nut	24	HSA120	Pawl Spring
4	HMW129	Axle Washer, $\frac{1}{8}$ " thick	25	HSA121	R.H. Ball Ring
5	HSA101	Cone with Dust Cap	26	HSA122	Inner Dust-Cap
6	HSA102	Outer Dust Cap	27	HSA123	Driver
7	HSA103	Ball Cage—(with Ball Bearings) (8)	28	HSL701	Sprocket Dust Cap
8	HSA104	Shell—40 hole—and Ball Cup Combined	29	See page 11	Sprocket, 16-20 plus 22T
9	HSA105	Shell—36 hole—and Ball Cup Combined	30	HMW127	Sprocket Spacing Washer
10	HSA106	Lubricator (Plastic)	31	HSL721	Sprocket Circlip
11	HSA107	Axle— $5\frac{3}{4}$ "	32	HMW147	Cone Lockwasher
12	HSA108	Axle— $6\frac{1}{4}$ "	33	HMN129	R.H. Axle Nut
13	HSA109	Dowel	34	HSA124	Axle Key
14	HSA110	Sun Pinion	35	HSA125	Indicator Coupling— $5\frac{3}{4}$ " Axle
15	HSA111	Low Gear Pawl	36	HSA126	Indicator Coupling— $6\frac{1}{4}$ " Axle
16	HSA112	Pawl Pin	37	HSA127	Thrust Ring
17	HSA113	Planet Cage	38	HMW148	Thrust Washer
18	HSA115	Planet Pinion	39	HSA128	Clutch Spring
19	HSA114	Pinion Pin	40	HSA129	Clutch Spring Cap
20	HSA116	Clutch Sleeve	41	HMN134	Indicator Coupling Connection Lock Nut
21	HSA117	Clutch			

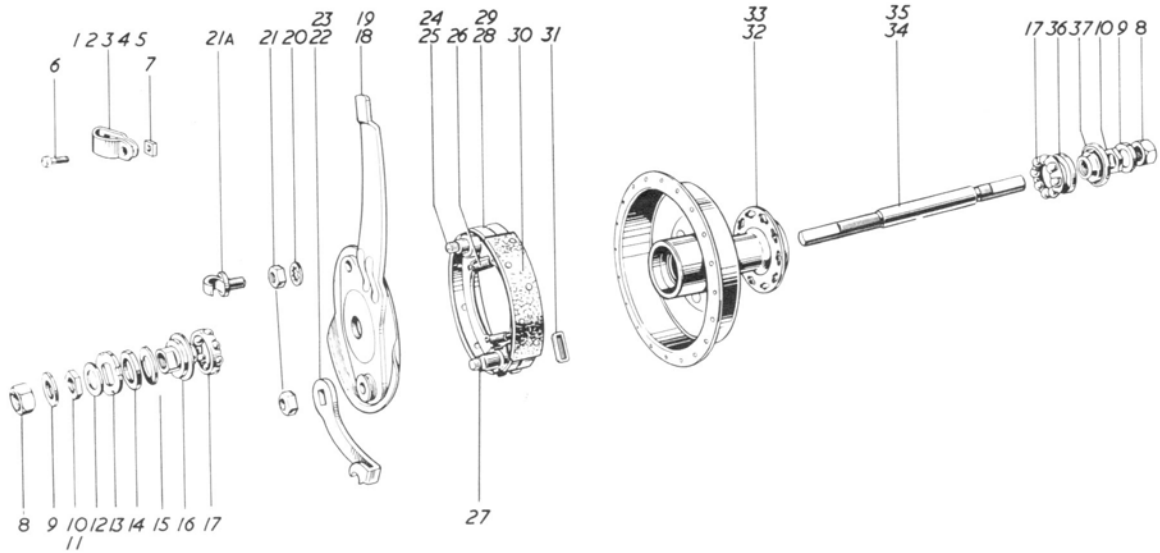
**FW WIDE-RATIO 4-SPEED HUB**

Photo No.	Sales No.	Description	Photo No.	Sales No.	Description
1	HMN130	L.H. Axle Nut	27	HMW147	Cone Lockwasher
2	HMW145	Axle Washer	28	HMN131	R.H. Axle Nut
3	HMN132	Cone Locknut	29	HSA136	Gear Indicator Rod— $5\frac{3}{4}$ " Axle
4	HMW129	Axle Spacing Washer ( $\frac{1}{8}$ " )	30	HSA137	Gear Indicator Rod— $6\frac{1}{4}$ " Axle
5	HSA101	Cone	31	HMN133	Locknut for Dog-Ring
6	HSA102	Outer Dust Cap	32	HMW149	Lockwasher for Dog-Ring
7	HSA103	Ball Cage	33	HSA138	Dog-Ring
8	HSA130	Shell—40 hole—and Ball Cup Combined	34	HSA139	Low Gear Key
9	HSA131	Shell—36 hole—and Ball Cup Combined	35	HSA140	Pinion Sleeve
10	HSA106	Lubricator (Plastic)	36	HSA141	Secondary Sun Pinion
11	HSA132	Planet Cage	37	HSA142	Primary Sun Pinion
12	HSA111	Low Gear Pawl	38	HSA143	Low Gear Spring—*
13	HSA120	Pawl Spring	39	HSA144	Axle— $5\frac{3}{4}$ "
14	HSA133	Planet Cage Pawl Pin	40	HSA145	Axle— $6\frac{1}{4}$ "
15	HSA134	Planet Pinion	41	HSA116	Clutch Sleeve
16	HSA135	Pinion Pin	42	HSA146	Collar for Compensator Spring
17	HSA118	Gear Ring	43	HSA147	Compensator Spring—*
18	HSA119	Gear Ring Pawl	44	HSA117	Clutch
19	HSA112	Pawl Pin	45	HSA163	Axle Key
20	HSA121	R.H. Ball Ring	46	HSA127	Thrust Ring
21	HSA122	Inner Dust Cap	47	HMW148	Thrust Washer
22	HSA123	Driver	48	HSA148	Clutch Spring—*
23	HSL701	Sprocket Dust Cap	49	HSA129	Spring Cap
24	HMW127	Sprocket Spacing Washer	50	HSA149	Gear Indicator Coupling
25	See page 11	Sprocket—16-20T	51	HMN134	Connection Locknut
26	HSL721	Sprocket Circlip			N.B.—* Replace Set of Springs

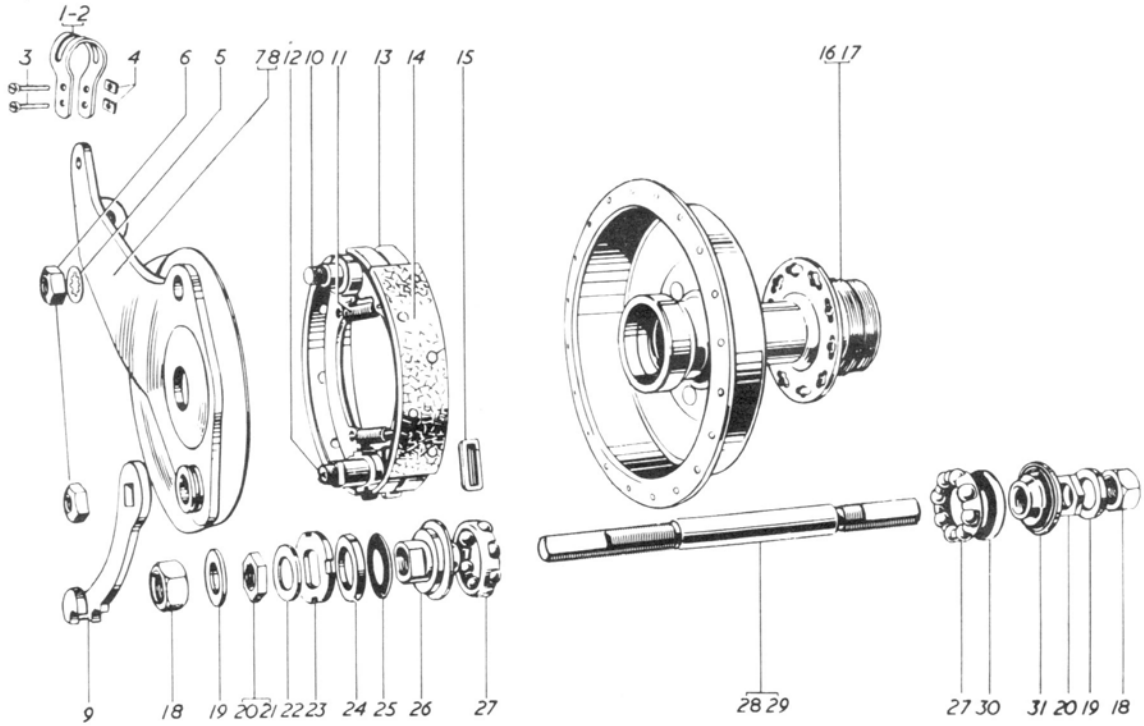
**TRIGGER 3- AND 4-SPEED CONTROL**

Photo No.	Sales No.	Description	Photo No.	Sales No.	Description	
1	HSJ501	3-speed Trigger Control with fulcrum, cable, and pulley	13	HSJ519	Pulley Wheel only	
	HSJ503	3-speed Trigger Control with fulcrum and cable (less pulley)	14	HMN142	Pulley Clip Nut	
	HSJ505	3-speed Trigger Unit ( $\frac{7}{8}$ " Clip)	15	HMB102	Pulley Clip Screw	
	HSJ506	3-speed Trigger Unit ( $\frac{11}{16}$ " Clip) for Taped Handlebars	16	HSJ520	Pulley Assembly, complete, for 1" tube	
	HSJ507	3-speed Trigger Unit ( $\frac{11}{16}$ " Clip) for Untaped Handlebars	17	HSJ521	Pulley Assembly, complete, for 1 $\frac{1}{8}$ " tube	
				HSJ502	4-speed Trigger Control with fulcrum, cable and pulley	
				HSJ504	4-speed Trigger Control with fulcrum and cable (less pulley)	
				HSJ508	4-speed Trigger Unit— $\frac{7}{8}$ " diam. clip	
				HSJ509	4-speed Trigger Unit— $\frac{11}{16}$ " diam. Clip for Untaped Handlebars	
				HSJ510	4-speed Trigger Unit— $\frac{11}{16}$ " diam. Clip for Taped Handlebars	
						<b>3-SPEED TWIST-GRIP CONTROL</b>
				1	HSJ535	Twistgrip Control complete with Spare Grip
				HSJ530	Twistgrip control cable for Top Tube Fitting Fulcrum (State length and colour)	
				HSJ551	Twistgrip Control Cable for Chainstay Fitting Fulcrum (State length and colour)	
			2	HSJ531	Collar	
			3	HMB103	Bolt for Collar	
			4	HSJ532	Detent Spring	
			5	HML101	Detent Ball, $\frac{3}{32}$ " diam.	
			6	HSJ533	Spring Ring	
			7	HSJ534	Twist Grip/Detent Plate	
				RNL104	Plastic Grip (L/H) White	
				RNL112	Plastic Grip (R/H) White	

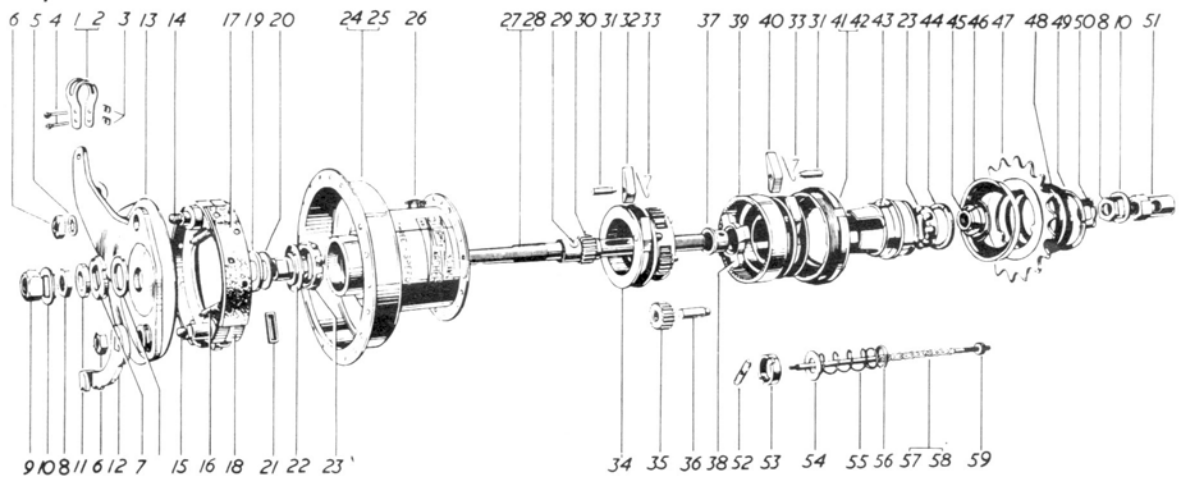
**BF/C INTERNAL EXPANDING BRAKE HUBS**



**BR/C INTERNAL EXPANDING BRAKE HUBS**



**AB/C INTERNAL EXPANDING BRAKE HUBS**



**BF/C INTERNAL EXPANDING BRAKE HUBS**

<i>Photo No.</i>	<i>Sales No.</i>	<i>Description</i>	<i>Photo No.</i>	<i>Sales No.</i>	<i>Description</i>
1	HSL702	Brake Arm Clip, round	21	HMN139	Cam Lever Nut for rod operation—BF
2	HSL703	Brake Arm Clip, oval	21A	HSB226	Cable Guide—BFC
3	HSL704	Brake Arm Clip, D-shaped	22	HSB204	Cam Lever for rod operation—BF
4	HSL705	Brake Arm Clip, Duplex	23	HSB205	Cam Lever for cable operation—BFC
5	HSL706	Brake Arm Clip, Raleigh Roadster	24	HSB206	Fulcrum Sleeve for cable operation—BFC
6	HMB102	Clip Screw	25	HSB207	Fulcrum Pin for rod operation—BF
7	HMN136	Nut for Clip Screw	26	HSB208	Brake Shoe Spring
8	HMN118	L.H. Axle Nut	27	HSB209	Brake Operating Cam
9	HMW129	Axle Washer— $\frac{1}{8}$ " thick	28	HSB210	Brake Shoes, complete sleeve type for cable operation—BFC
10	HMN137	Cone Locknut	29	HSB211	Brake Shoes, complete pin type, for rod operation—BF
11	HMN138	Cone Locknut with Spigot	30	HSB212	Brake Linings (pair) with Rivets
12	HMW146	Axle Washer— $\frac{1}{8}$ " thick	31	HSB213	Shoe End Cap
13	HMW151	Notched Cone Adjusting Washer	32	HSB214	Shell—32 hole
14	HMW152	Spacing Washer	33	HSB215	Shell—36 hole
15	HMW154	Packing Washer	34	HSB216	Axle—5"
16	HSB201	L.H. Cone—Adjusting Cone	35	HSB217	Axle— $4\frac{3}{4}$ "
17	HSA103	Ball Cage	36	HSA102	Outer Dustcap
18	HSB202	Brake Plate and Arm for rod operation—BF	37	HSB218	R.H. Cone—(Slotted)—Fixed Cone
19	HSB203	Brake Plate and Arm for cable operation—BFC			
20	HMW157	Shakeproof Washer for rod operation—BF			

**BR/C INTERNAL EXPANDING BRAKE HUBS**

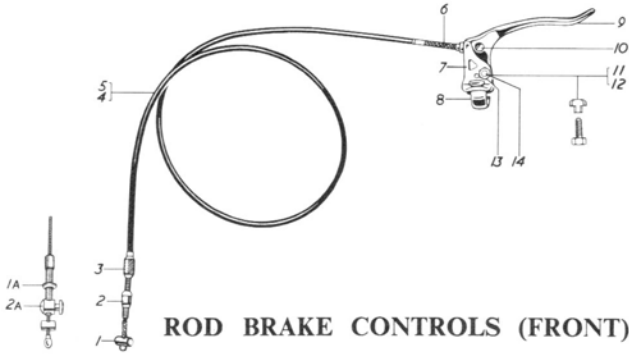
<i>Photo No.</i>	<i>Sales No.</i>	<i>Description</i>	<i>Photo No.</i>	<i>Sales No.</i>	<i>Description</i>
1	HSL710	Brake Arm Clip—small, BRC	16	HSB221	Shell—40 hole
2	HSL709	Brake Arm Clip—large, BR	17	HSB222	Shell—36 hole
3	HMB102	Clip Bolt (2 off)	18	HMN118	Axle Nut
4	HMN136	Clip Bolt Nut (2 off)	19	HMW129	Axle Washer, $\frac{1}{8}$ " thick
5	HMW157	Shakeproof Washer	20	HMN137	Cone Locknut
6	HMN139	Locknut	21	HMN138	Cone Locknut with Spigot
7	HSB219	Brake Plate and Arm, rod operation—BR	22	HMW146	Axle Washer, $\frac{1}{8}$ " thick
8	HSB219	Brake Plate and Arm, cable operation—BRC	23	HMW151	Notched Cone Adjusting Washer
9	HSB220	Cam Lever	24	HMW152	Spacing Washer
10	HSB207	Fulcrum Pin	25	HMW154	Packing Washer
11	HSB208	Brake Shoe Spring	26	HSB201	L.H. Cone—Adjusting Cone
12	HSB209	Brake Operating Cam	27	HSA103	Ball Cage
13	HSB211	Brake Shoe complete	28	HSB223	Axle— $5\frac{3}{4}$ "
14	HSB212	Brake Linings (pair) with rivets	29	HSB224	Axle— $6\frac{1}{4}$ "
15	HSB213	Brake Shoe End Cap	30	HSA102	Outer Dust Cap
			31	HSB218	R.H. Cone (Slotted)—Fixed Cone

**AB/C INTERNAL EXPANDING BRAKE HUBS**

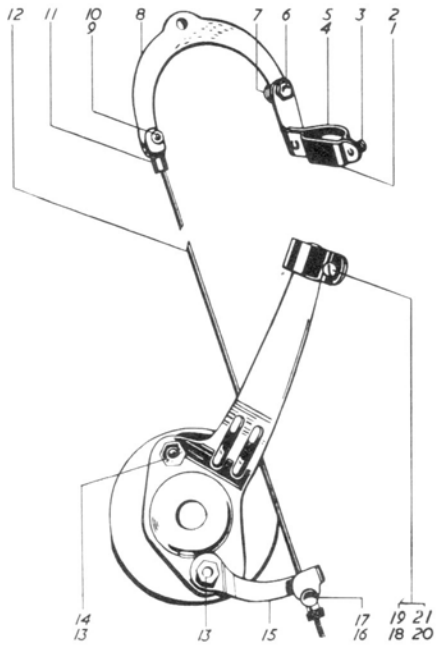
<i>Photo No.</i>	<i>Sales No.</i>	<i>Description</i>	<i>Photo No.</i>	<i>Sales No.</i>	<i>Description</i>
1	HSL709	Brake Arm Clip complete (large)	31	HSA112	Low Gear Pawl Pin
2	HSL710	Brake Arm Clip complete (small)	32	HSA111	Low Gear Pawl
3	HMN136	Clip Nut	33	HSA120	Pawl Spring
4	HMB102	Clip Screw	34	HSA153	Planet Cage
5	HMW157	Shakeproof Washer	35	HSA115	Planet Pinion
6	HMN139	Nut	36	HSA114	Pinion Pin
7	HMW151	Notched Adjusting Washer	37	HSA116	Clutch Sleeve
8	HMN132	Cone Locknut	38	HSA117	Clutch
9	HMN128	L.H. Axle Nut	39	HSA118	Gear Ring
10	HMW145	Axle Washer	40	HSA119	Gear Ring Pawl
11	HMW129	Spacing Washer— $\frac{1}{8}$ " thick	41	HSA121	R.H. Ball Ring
12	HSB220	Cam Lever	42	HSA122	Inner Dust Cap
13	HSB219	Brake Plate and Arm	43	HSA123	Driver
14	HSB207	Fulcrum Pin	44	HSA102	Outer Dust Cap
15	HSB209	Brake Operating Cam	45	HSA101	R.H. Cone with Dust Cap
16	HSB208	Brake Spring	46	HSL701	Sprocket Dust Cap
17	HSB212	Brake Linings (pair) with Rivets	47	See page 11	Sprocket, 16-20T and 22T
18	HSB210	Brake Shoe Assembly	48	HMW127	Sprocket Spacing Washer— $\frac{1}{16}$ "
19	HMW154	Thin Packing Washer	49	HSL721	Circlip
20	HMW153	Spacing Washer	50	HMW147	Lockwasher for R.H. Cone
21	HSB213	Brake Shoe End Cap	51	HMN129	R.H. Axle Nut
22	HSA150	L.H. Cone with Dust Cap	52	HSA124	Axle Key
23	HSA103	Ball Cage with eight $\frac{1}{4}$ " diameter Balls	53	HSA127	Thrust Ring
24	HSA154	Shell combined with Ball Cup—40 hole	54	HMW148	Thrust Washer
25	HSA155	Shell combined with Ball Cup—36 hole	55	HSA128	Clutch Spring
26	HSA106	Lubricator	56	HSA129	Clutch Spring Cap
27	HSA107	Axle— $5\frac{3}{4}$ "	57	HSA125	Gear Indicator Coupling—for $5\frac{3}{4}$ " Axle
28	HSA108	Axle— $6\frac{1}{4}$ "	58	HSA126	Gear Indicator Coupling—for $6\frac{1}{4}$ " Axle
29	HSA109	Dowel for Sun Pinion	59	HMN134	Connection Lock-nut
30	HSA110	Sun Pinion			



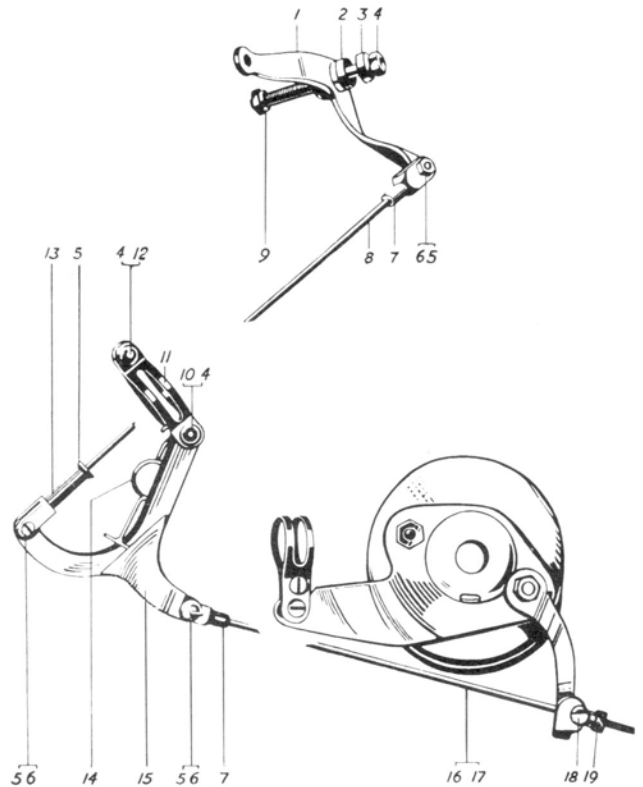
### CABLE BRAKE CONTROLS (FRONT AND REAR)



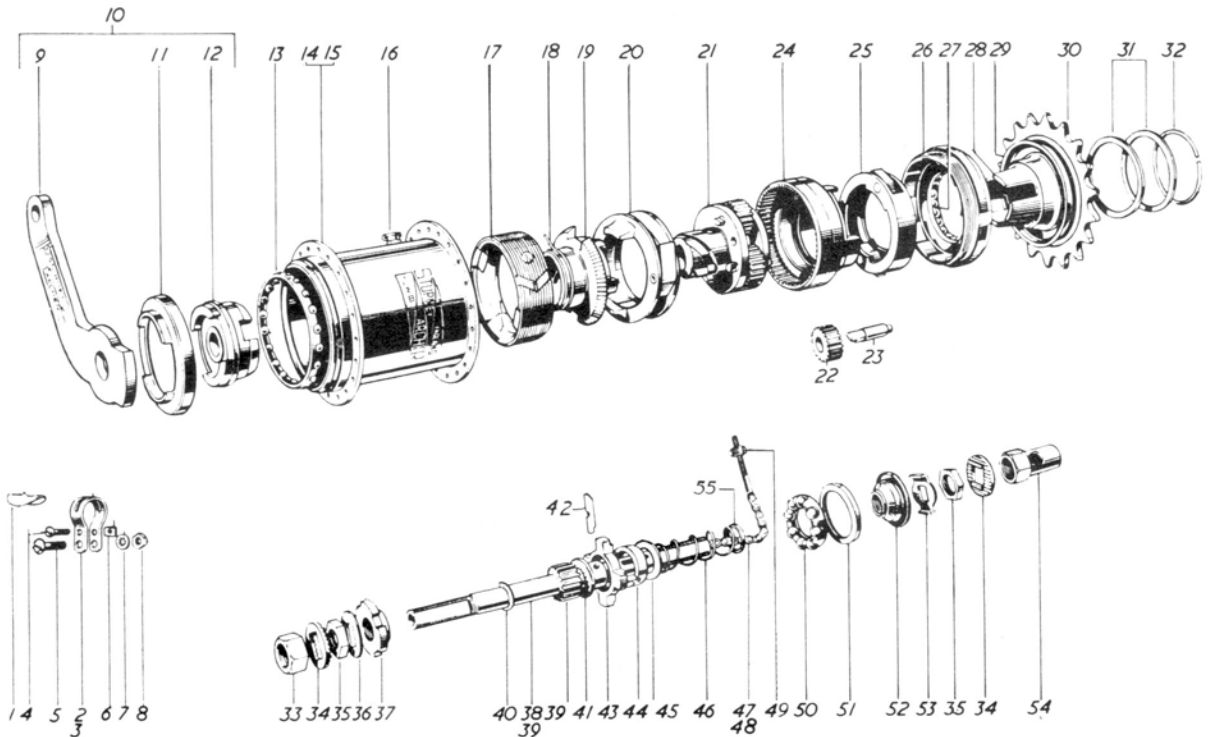
### ROD BRAKE CONTROLS (FRONT)



### ROD BRAKE CONTROLS (REAR)

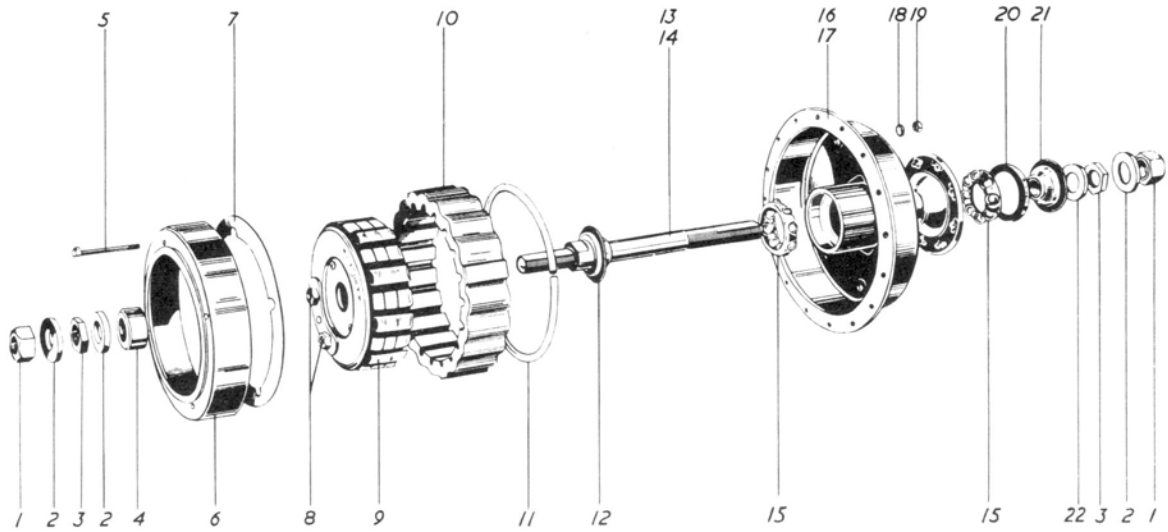


### TCW COMBINED 3-SPEED GEAR COASTER BRAKE

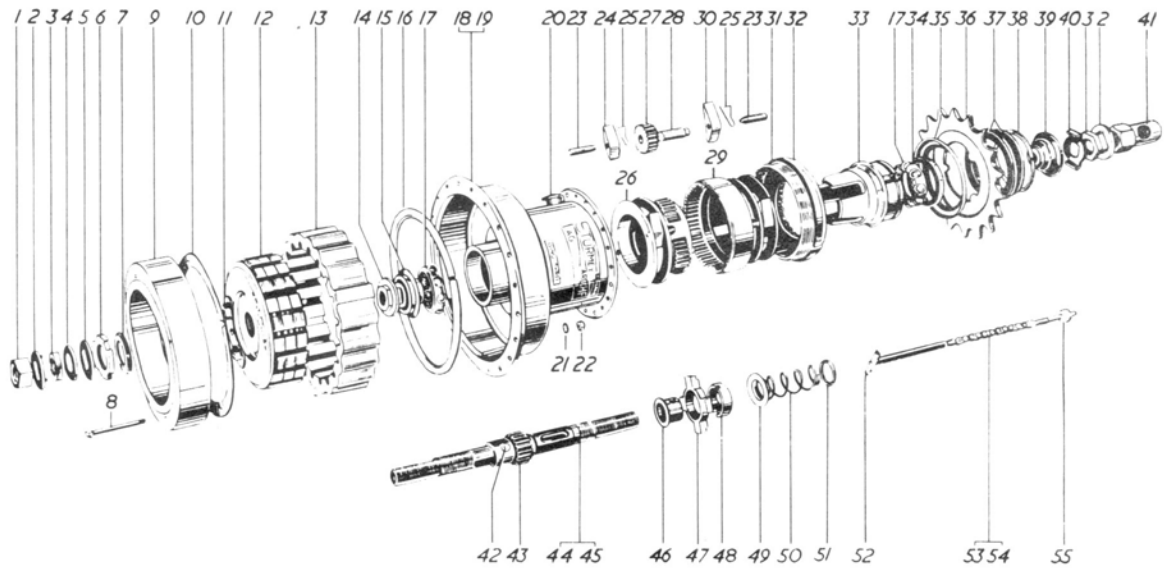




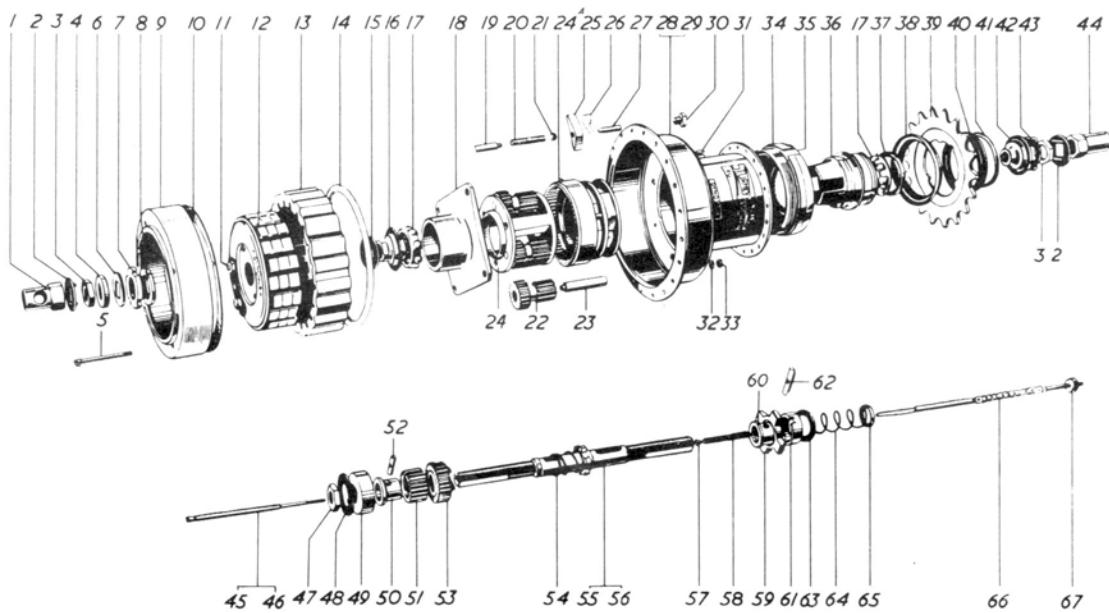
**GH6 6v. "DYNOHUB" HUB LIGHTING UNIT**



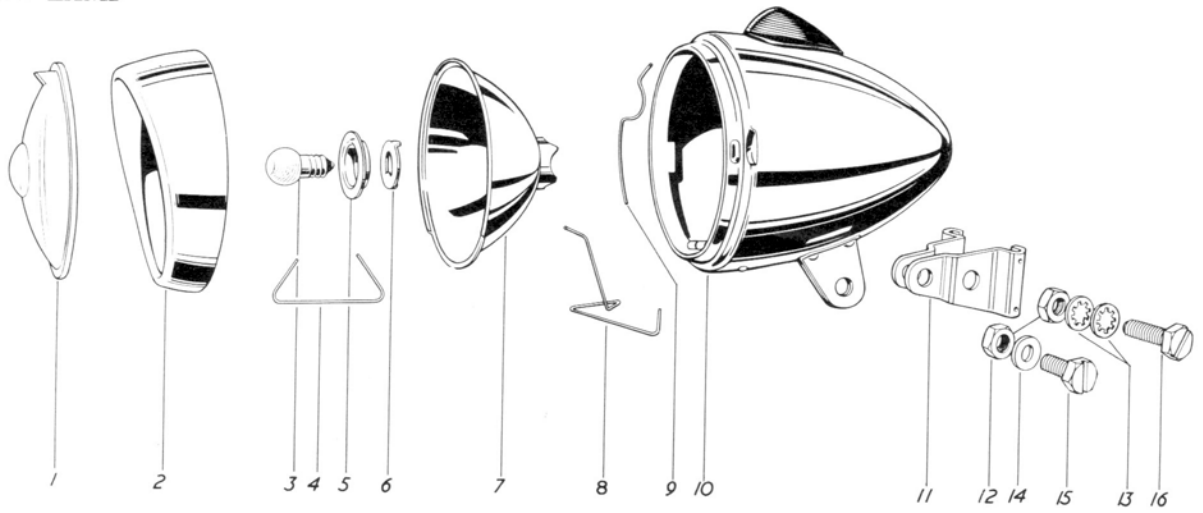
**AG WIDE-RATIO 3-SPEED HUB COMBINED WITH 6v. "DYNOHUB"**



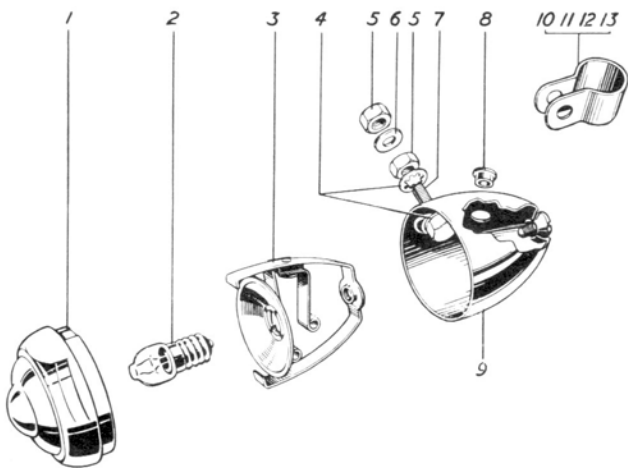
**FG WIDE-RATIO 4-SPEED HUB COMBINED WITH 6v. "DYNOHUB"**



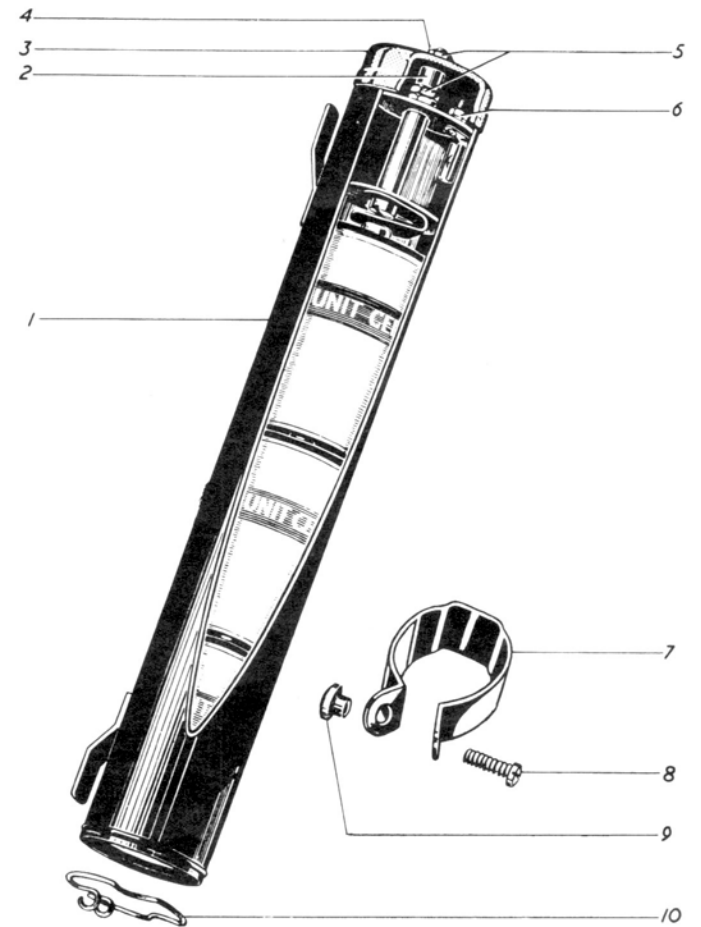
# HEAD LAMP



# REAR LAMP



# DRY BATTERY UNIT



### HEAD LAMP

Photo No.	Sales No.	Description	Photo No.	Sales No.	Description
	HSD328	Headlamp (Type 'R') with 6-volt, .2-amp. bulb	7	HSD337	Reflector (Type 'R')
	HSD329	Headlamp (Type 'S') with 6-volt, .2-amp. bulb	8	HSD345	Reflector (Type 'S')
1	HSD330	Lens, Type 'R'	9	HSD346	Earth Contact Spring (Type 'R')
	HSD344	Lens, Type 'S'		HSD347	Earth Contact Spring (Type 'S')
2	HSD331	Rim, Type 'R'	10	HSD339	Hinge Pin
	HSD343	Rim, Type 'S'		HSD340	Lamp Body (Type 'R')
3	HSD332	Bulb—6-volt, .2-amp.	11	HSD341	Lamp Body (Type 'S')
4	HSD334	Reflector securing spring	12	HSD342	Lamp Bracket Adaptor
5	HSD335	Bulb Holder	13	HMN143	Fixing Nut
6	HSD336	Bulb Holder Lock Ring	14	HMW157	Shakeproof Washer
			15	HMW101	Plain Washer
			16	HMB138	Fixing Bolt, short
				HMB139	Fixing Bolt, long
				HSD391	Switch, complete (Type 'R') and (Type 'S')

### REAR LAMP

Photo No.	Sales No.	Description
	HSD352	Rear Lamp, complete with clip for D-shaped tube
	HSD353	Rear Lamp, complete with clip for oval tube
	HSD354	Rear Lamp, complete with clip for $\frac{3}{8}$ " round tube
	HSD355	Rear Lamp, complete with clip for $\frac{1}{2}$ " round tube
1	HSD356	Dome
2	HSD357	Bulb—6-volt, .1 amp.
3	HSD358	Interior assembly, complete
4	HMW160	Shakeproof Washer
5	HMN106	Clip Fixing Nut
6	HMW105	Clip Washer
7	HMB140	Fixing Bolt
8	HSD359	Grommet
9	HSD360	Body, complete
10	HSD361	Clip— $\frac{3}{8}$ " round
11	HSD362	Clip— $\frac{1}{2}$ " round
12	HSD363	Clip—oval
13	HSD364	Clip—D-shaped

### DRY BATTERY UNIT

Photo No.	Sales No.	Description
1	HSD312	Battery Casing, complete (less flex)
2	HSD313	Spacing Sleeve
3	HSD314	Rubber Cap
4	HMW159	Securing Washer
5	HMN140	Fixing Nut
6	HMN141	Terminal Nut
7	HSD315	Frame Clip
8	HMB103	Clip Bolt
9	HMN142	Clip Nut
10	HSD316	Spring Ring

### SPROCKETS

Sales No.	No. of Teeth	Pitch
HSL713	13T	$\frac{1}{2}$ " × $\frac{1}{8}$ "
HSL714	14T	$\frac{1}{2}$ " × $\frac{1}{8}$ "
HSL715	15T	$\frac{1}{2}$ " × $\frac{1}{8}$ "
HSL716	16T	$\frac{1}{2}$ " × $\frac{1}{8}$ "
HSL717	17T	$\frac{1}{2}$ " × $\frac{1}{8}$ "
HSL718	18T	$\frac{1}{2}$ " × $\frac{1}{8}$ "
HSL719	19T	$\frac{1}{2}$ " × $\frac{1}{8}$ "
HSL720	20T	$\frac{1}{2}$ " × $\frac{1}{8}$ "
HSL722	22T	$\frac{1}{2}$ " × $\frac{1}{8}$ "
HSL723	18T	$\frac{1}{2}$ " × $\frac{3}{16}$ "
HSL724	19T	$\frac{1}{2}$ " × $\frac{3}{16}$ "

### FLEX WIRES

Photo No.	Sales No.	Description
1	HSD317	Flex Wire from hub to headlamp—GH6
2	HSD318	Flex Wire from headlamp to tail lamp—GH6
3	HSD319	Flex Wire from headlamp to tail lamp and hub—AG and FG
4	HSD320	Flex Wire from headlamp to D.B.U. and tail lamp—GH6 with D.B.U.
5	HSD321	Wiring Assembly for AG or FG with D.B.U.
6	HSD322	Earth Wire from tail lamp to seat lug bolt
7	HSD323	Wire Tag for 2BA—Ring Type
8	HSD324	Wire Tag for 2BA—Hook Type
9	HSD325	Wire Tag for 6BA—Ring Type
10	HSD326	Wire Tag for Seat Bolt
11	HSD327	Plug in Ferrule for switch connection and rear lamp

**FREEWHEELS**

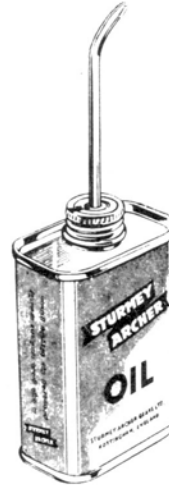
<i>Sales No.</i>	<i>Description</i>
HSL127	(18T) Central $\frac{1}{2}$ " $\times$ $\frac{1}{8}$ "—Double Race
HSL128	(18T) Inset $\frac{1}{4}$ " $\times$ $\frac{1}{8}$ "—Double Race
HSL129	(18T) Carrier $\frac{1}{2}$ " $\times$ $\frac{1}{16}$ "—Double Race
HMW112	Freewheel Spacing Washer

**MISCELLANEOUS**

<i>Sales No.</i>	<i>Description</i>
HSL711 HSL726	Polythene gear indicator guard Cable anchorage assembly

**OIL**

<i>Sales No.</i>	<i>Description</i>
HMA103	Sturmey Archer Oil—8 oz. tin



Always insist on Sturmey Archer Oil—specially prepared for bicycle gears

**STURMEY**  
**ARCHER**